

English Tudor Home, Newton, MA

Timeline: September 2017

Abbot's Small Projects Division recently completed a masonry restoration project at a distinguished English Tudor style home in Newton, MA. Built in 1930, this historic home is constructed of brick with precast concrete sills and ornamental stone work around the windows.



Figure 2.
English Tudor Home
(before)

In late summer 2017, the owner contacted Abbot to examine the deteriorated stone turret in the front entranceway and both sides of the windows, and make recommendations for repairs. Drawing from its vast experience with historic restoration, Abbot suggested that the stonework could be repaired rather than replaced. Based on this evaluation, Abbot proceeded to remove the defective stone areas and replicate the original construction details with restoration materials. To complete the repair, Abbot coated the area with a water resistant elastomeric coating.

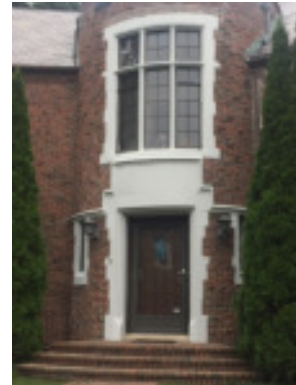


Figure 1.
English Tudor Home
(after)

Abbot's Small Projects Division specializes in structures ranging from 1-3 stories to buildings up to 60 feet high. Service areas include condominiums, apartments, small office buildings, and private residences.